

CHENANGO 4-H SNAPSHOT

Goodbye Miss Janet

Fifteen years later with tons of fun along the way it is with a heavy heart that it is time we say goodbye to Miss Janet. Janet has been such an important part of the Cooperative Extensions 4-H family it is difficult saying farewell but we wish her all of the best as she goes ahead to make new memories and finds new 4-H adventures.

Janet Pfromm began working at Chenango County CCE in 2005. Janet brought her knowledge of farming and love of 4-H with her. Her years studying at Cornell and working as a summer intern with Wayne County 4-H gave her a unique opportunity to become Chenango County's 4-H Coordinator.

As our 4-H Coordinator she provided strong leadership to the county livestock program enriching youth opportunities to participate in Dairy Bowl, Dairy Judging, county and regional showing opportunities. She also has been responsible for growing the afterschool programs by leaps and bounds, which expanded from a few contacts to twelve contacts in any given week. Her positive energy and genuine care for kids made each person she came in contact with whether youth or adult feel important and a part of something great, the 4-H family!

Janet has been instrumental in adding new opportunities for Chenango County youth including but not limited to: livestock auction at the fair, Master Showmanship Competition, Fun and often crazy activities every evening at the fair, expanded Afterschool programs, Outdoor Adventure Program, Shooting Sports Program, 2020 Ag-Stravaganza.

The two greatest things Janet has given Chenango County 4-H is her energy and love of kids. She will typically spend fourteen hours a day at the County Fair making sure all of the animal shows are running smoothly and spending each evening bubble wrestling or participating in pie in the face activities. Janet has been tireless in her desire to provide opportunities for youth in Chenango County.

We wish Janet Pfromm well, as she leaves her Chenango County legacy behind to begin a new adventure with a pair of red snake boots in true Janet style, as the 4-H Agent in two counties in Kansas.

Janet you will be greatly missed!



This publication serves to update, inform, and inspire you about all things Chenango County 4-H. Look for yourself in the photos, check out upcoming events so you don't miss anything, and complete the activities in these pages! Enjoy!



4-H Spotlights

The 4-H Spotlight is a place to share what our 4-Hers' have been up to. Please send us your photos and a discription of what you are doing. If you have made crafts, made a snowman, taken pictures, worked with your animals, or done a community service project we would like to know. Any activity you do matters and it encourages others to stay involved.



BOO BASH

FUN TIMES!

4-H Boo Bash

Thank you to everyone who volunteered, sponsored and attended the 4-H Boo Bash on Halloween! We had a wonderfully scary time of Halloween science, crafts, and munchkin march! Thanks to the following: Kelly Ames, Fidelis; The Whaley Family, Jill and Emilee Bennett, the Van Alst Family, Louise Butcher, and Miss Nancy!



4-H FALL & WINTER MAKE & TAKES

Chenango County 4-H held fall and winter craft make & take days for members to drop in and get crafty. Projects included gratitude cards, giving plates, owl/turkey centerpieces, glass etching, burlap wreaths, gift bags, fleece scarves, luminary jars and fabric postcards.



HIDDEN PONDS HORSE LOVERS

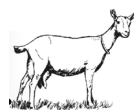
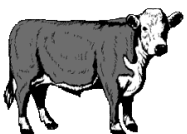
THANK YOU!!!

A BIG THANK YOU to the Hidden Ponds Horse Lovers 4-H Club! They were wonderful hosts at this years Leaders / Volunteers Christmas Tea. Things were a bit different this year because of Covid restrictions but Hidden Ponds rose to the occasion by hosting this years Tea in the riding arena. Everyone bundled up for the cold weather and had a great time. Club members were fantastic auctioneers! The auction is one way the the Leaders / Volunteer Association raise money that will go right back to 4-H kids in many different ways. After the Tea some of the Club members presented Miss Janet with a beautiful going away present. Nice job ladies!



4-H LIVESTOCK SCHOLARSHIPS

Applications for those members, and non-members willing to join 4-H, looking to get into a livestock project area are being accepted for the annual 4-H Livestock Scholarship Program. This program annually awards youth members beef, dairy, meat/dairy goats, sheep, and swine project animals that may be sold through the annual 4-H Livestock Auction or may serve as foundation animals for a members herd or flock. Applications can be found on the 4-H website and must be returned by March 1.



4-Hers STAYED ACTIVE IN 2020

COMMUNITY SERVICE

ARTS AND CRAFTS

ZOOM

ANIMAL PROJECTS

AMERICAN CHESTNUT PROJECT

ROCK PAINTING

OUTDOOR ADVENTURE

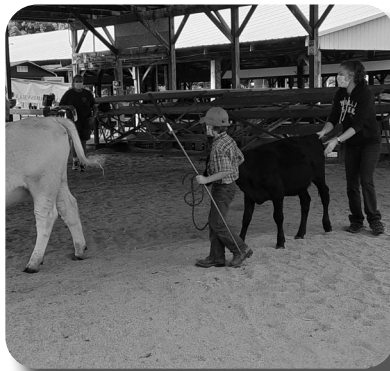
CHALLENGES

AG STRAVAGANZA

SHOOTING-SPORTS

MUCH MORE

INCUBATION AND EMBRYOLOGY



DAIRY BOWL AND HORSE BOWL PRACTICES



Come to the CCE Office on Tuesday & Friday nights this winter to learn more about cows and horses! Rhonda Turrell will be leading horse bowl practices Friday from 6-7pm starting Jan. 15th. Victoria Peila will be leading dairy bowl practices Tuesdays 7-8pm starting Jan. 12th. All practices will be hands-on and will cover the basic animal biology through industry events.

To register, please email Rhonda, rlt236@cornell.edu.

4-H OUTDOOR ADVENTURE!

Email Erica to sign up for the following:

Tuesday December 29th Hike and Shelter Build! 10am to 1pm at Whaupanaucou State Forest.

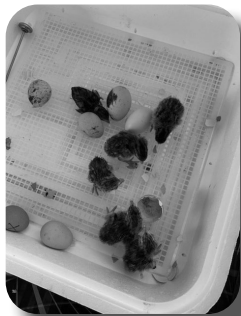
Saturday January 23rd Snowshoeing adventure! 10am to 12pm. Location TBD. We have snowshoes.

Saturday February 6th Learn how to ice fish! 10am to 12pm. This is a joint program with Friends of Rogers and will take place at Rogers.

Friday February 12th Learn to cross country ski! 1:30 pm to 3:00pm. At Friends of Rogers, in Sherburne.



4-H INCUBATION & EMBRYOLOGY PROGRAM



The 4-H Incubation and Embryology Program is a great way for schools and families to help young people observe the mystery of life and learn some of the principles of reproduction. The project provides an opportunity for youth to work with living, growing chick embryos. A secondary but equally important objective is to provide leaders and teachers with an interesting and unique educational tool. Not only is the embryology project fun, but it also opens many opportunities for learning.

Delivery for eggs is Monday, April 19. Orders must be received by March 1. For more information and to receive an order packet, please contact Erica Clark, 607-334-5841 or elc97@cornell.edu.

PHEASANT PROJECT

Since 2006, Chenango County has reared and released over 13,000 pheasants into the wild for all to enjoy. Thank you for your past involvement in this project!

We are currently taking orders for the 2021 Project and hope to have 1,000 pheasant chicks reared this project year!

All orders, no matter the size, will be taken in lots of 25 birds.



A free-will donation of \$5 per order will be accepted to cover the mailing costs of this great program. Orders due March 20, 2021.

Please contact Rhonda Turrell to place your order or to request more information, 607-334-5841 x1111 or rlt236@cornell.edu



AFTER SCHOOL PROGRAM

Erica is excited to start an after-school program for 4-H'ers, meeting alternately at our CCE building and Friends of Rogers, in Sherburne. We will have fun with hands-on activities, science experiments and art projects. Space is limited to 10 kids, ages 8 and up. We will be wearing masks at all times. Registration is required, please email Erica at elc97@cornell.edu

The program will kick off in February!

Wednesday February 3rd, from 3:30 to 4:30 at CCE in Norwich

Wednesday February 17th, from 3:30 to 4:30 at Friends of Rogers in Sherburne

Wednesday March 3rd, from 3:30 to 4:30 at CCE in

Wednesday March 17th, from 3:30 to 4:30 at Friends of Rogers in Sherburne

Other 4-H Programs:

January Maple Project! Join us at Schmidt's Scattered Maple Farm later in January. We will learn about the sugar-bush and help install spouts and a new line for sap. Please email Erica for more info and to sign up, at elc97@cornell.edu

Friday February 12 Mini Craft Camp at CCE. 9am to 11am. Please email Erica for more info and to sign up, at elc97@cornell.edu



Winter





P M U F Y D R H Q L T E K C A J E
 Y T S C A R F E V N G W S I B K R
 I C J Z D O Y G T B M H S W A P L
 G E S F I S R U N A O X C L Q I H
 L V A N L T K S J V E B F Z U K O
 O T P Y O D Z I E H A W R C S S F
 O G E C H W T L I R O J S H D N H
 P N X N S A B V H N W F I K G O Z
 L I Q U E N Y O S I G V M A N W R
 F Z A D R Z L S A G E Q I P O S C
 N E B H Y S O F I R M U T E S U J
 T E I C E B E R G E D O T K A I W
 X R G V L A N U F B I C E R E T F
 A F O Z D R I B T E P U N A S R E
 M L U S O L S T I C E H Y F O I T
 G I P H A N B S M I L Q A S V G Y
 E Z N I U G N E P L A F T U M S L



- | | | |
|----------|---------|-----------|
| FREEZING | JACKET | SKIING |
| FROST | MITTEN | SLUSH |
| FROZEN | PENGUIN | SNOWBOARD |
| GLOVES | SCARF | SNOWFLAKE |
| HOLIDAY | SEASON | SNOWSUIT |
| ICEBERG | SHIVER | SOLSTICE |
| IGLOO | SHOVEL | SWEATER |



| Sunday | Monday | Tuesday | Wednesday | Thursday | Friday | Saturday |
|--------|---|------------------------------------|--|----------|--|---|
| |  | | | | 1 CCE Closed | 2 |
| 3 | 4 | 5 | 6 | 7 | 8 | 9 |
| 10 | 11 | 12 Dairy Bowl 7:00 pm CCE | 13 | 14 | 15 Hippology Horsebowl 6:00 pm | 16 |
| 17 | 18 | 19 Dairy Bowl 7:00 pm CCE | 20 | 21 | 22 Hippology Horsebowl 6:00 pm | 23 Snowshoeing Adventure 10 - 12 |
| 24 | 25 | 26 Dairy Bowl 7:00 pm CCE | 27 | 28 | 29 Hippology Horsebowl 6:00 pm | 30 |
| 31 | | | | | | |
| Sunday | Monday | Tuesday | Wednesday | Thursday | Friday | Saturday |
| | 1 Sewing Scholarship Due | 2 Dairy Bowl 7:00 pm CCE | 3 Afterschool Program 3:30 - 4:30 CCE | 4 | 5 Hippology Horsebowl 6:00 pm | 6 Learn how to Ice Fish 10 - 12 |
| 7 | 8 | 9 Dairy Bowl 7:00 pm CCE | 10 | 11 | 12 Mini Craft Camp 9 - 11 Learn to Cross Coun- try Ski 1:30 - 3:00 Hippology/Horsebowl 6:00 pm | 13 |
| 14 | 15 | 16 Dairy Bowl 7:00 pm CCE | 17 Afterschool Program 3:30 - 4:30 Rogers Center | 18 | 19 Hippology Horsebowl 6:00 pm | 20 |
| 21 | 22 | 23 Dairy Bowl 7:00 pm CCE | 24 | 25 | 26 Hippology Horsebowl 6:00 pm | 27 |
| 28 | | |  | | | |

**If you have any questions about the events in this calendar, please
contact Richard Turrell at: rlt229@cornell.edu**

**Chenango County 4-H
99 North Broad Street
Norwich, NY 13815**



NON-PROFIT ORG
US POSTAGE PD
NORWICH, NY
PERMIT NO. 46



**Miss Janet, Miss Erica and Mr Richard continue to work hard keeping ideas coming your way,
so send photos so we would love to know what you are up to!
Send pictures to Richard: rlt229@cornell.edu or Rhonda rlt236@cornell.edu**